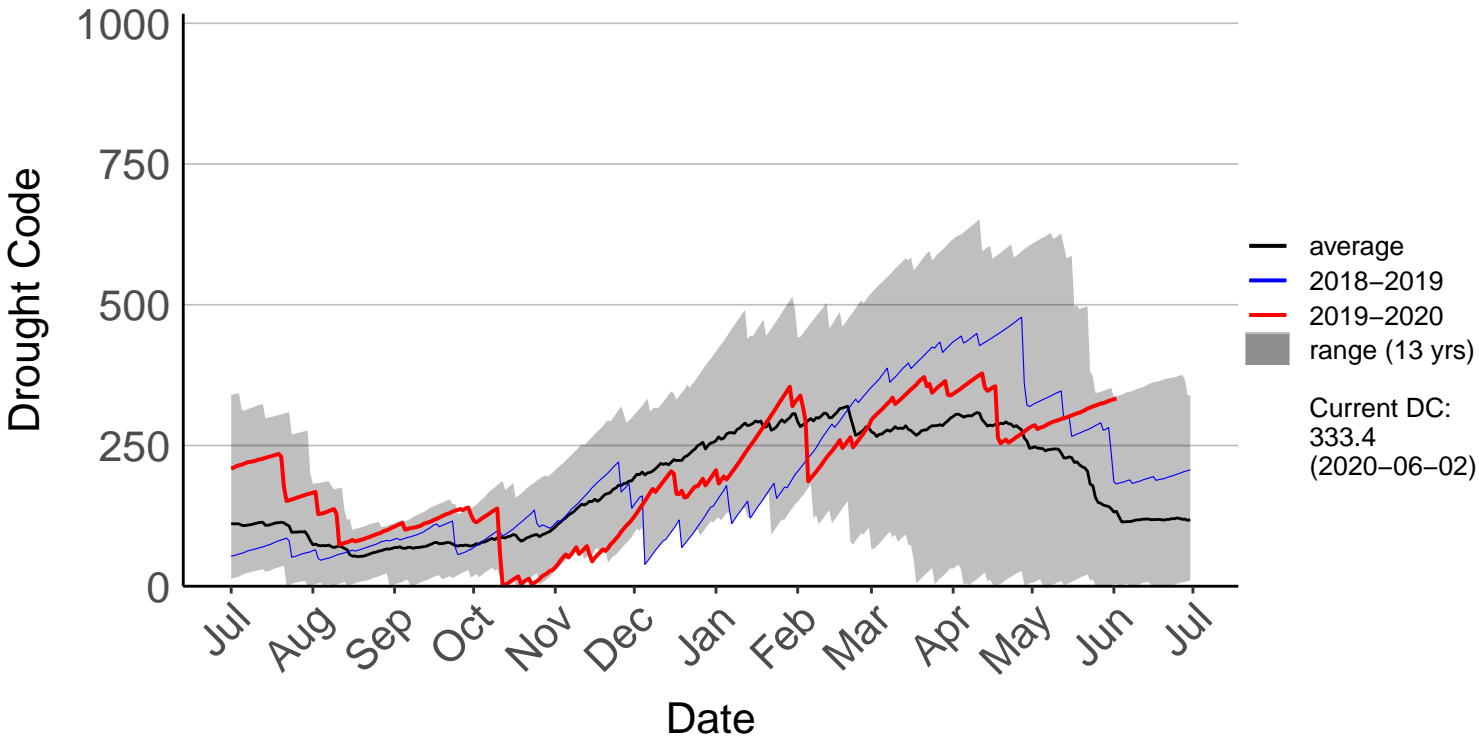
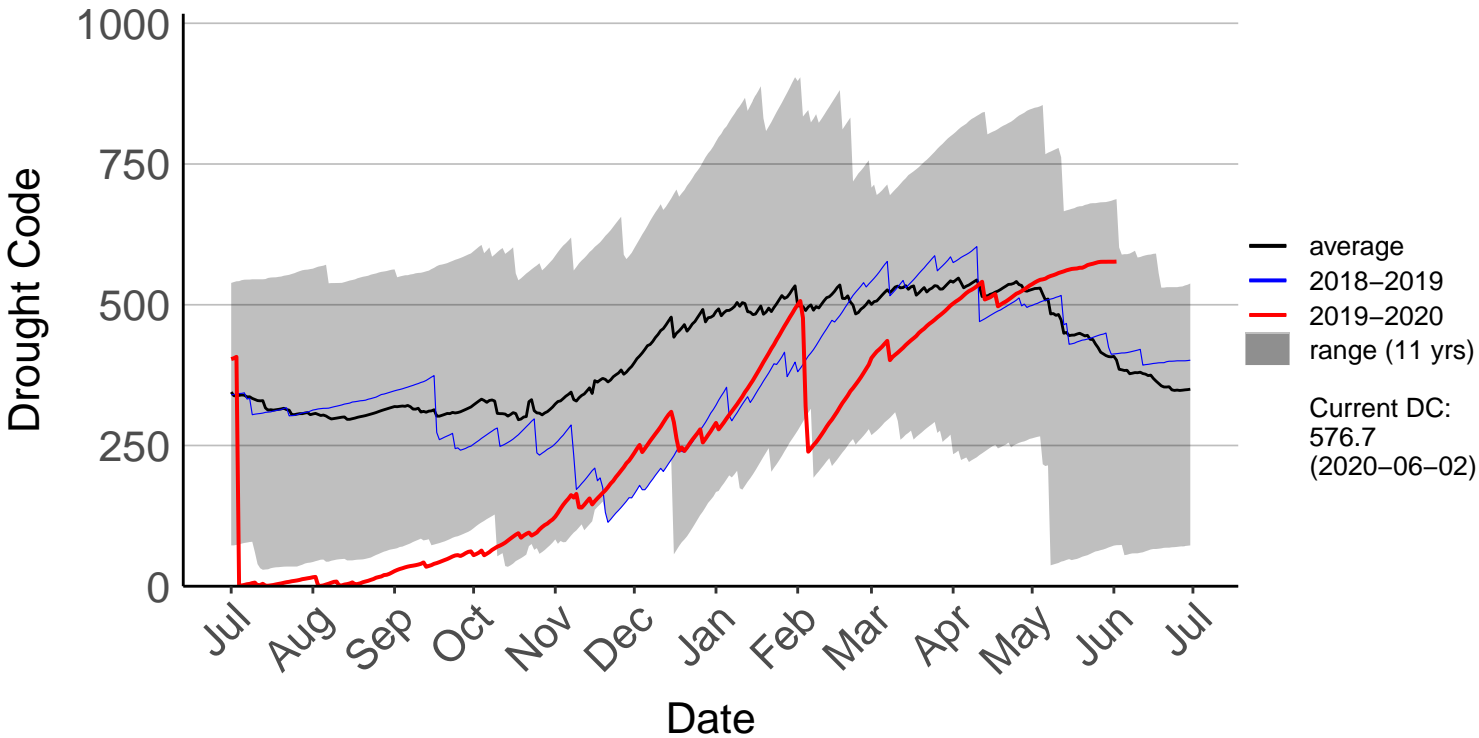


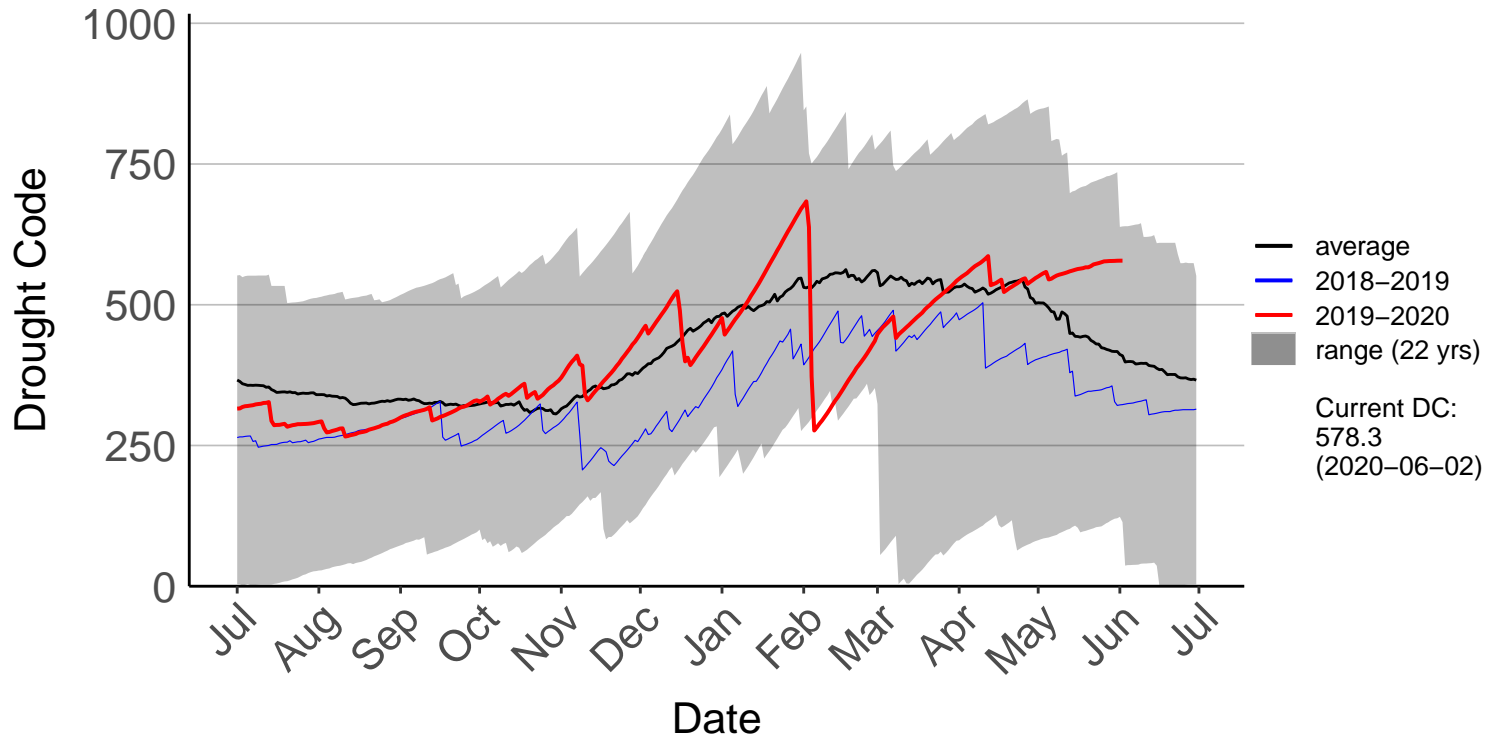
Buckland's Raws (Jul 2007 to Jun 2020)



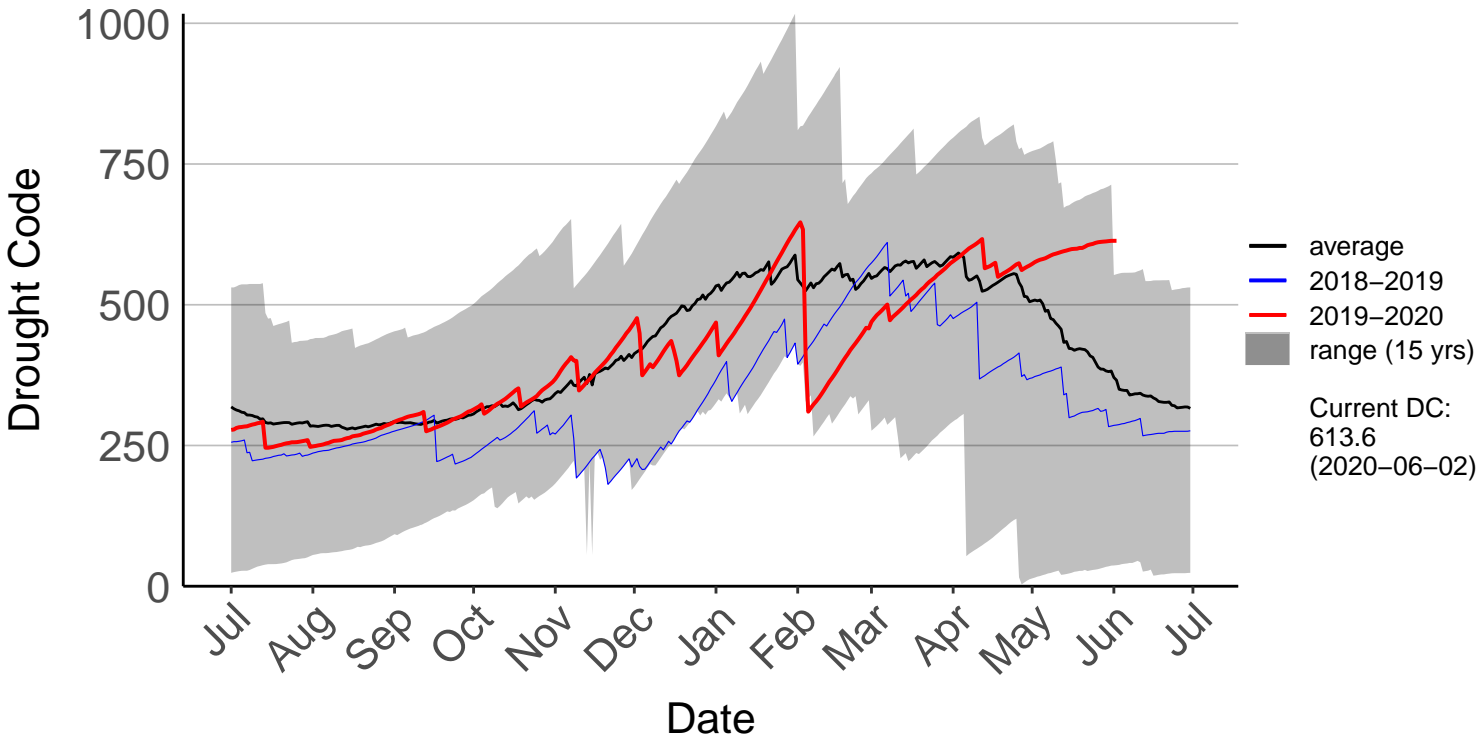
Butchers Dam Raws (Dec 2009 to Jun 2020)



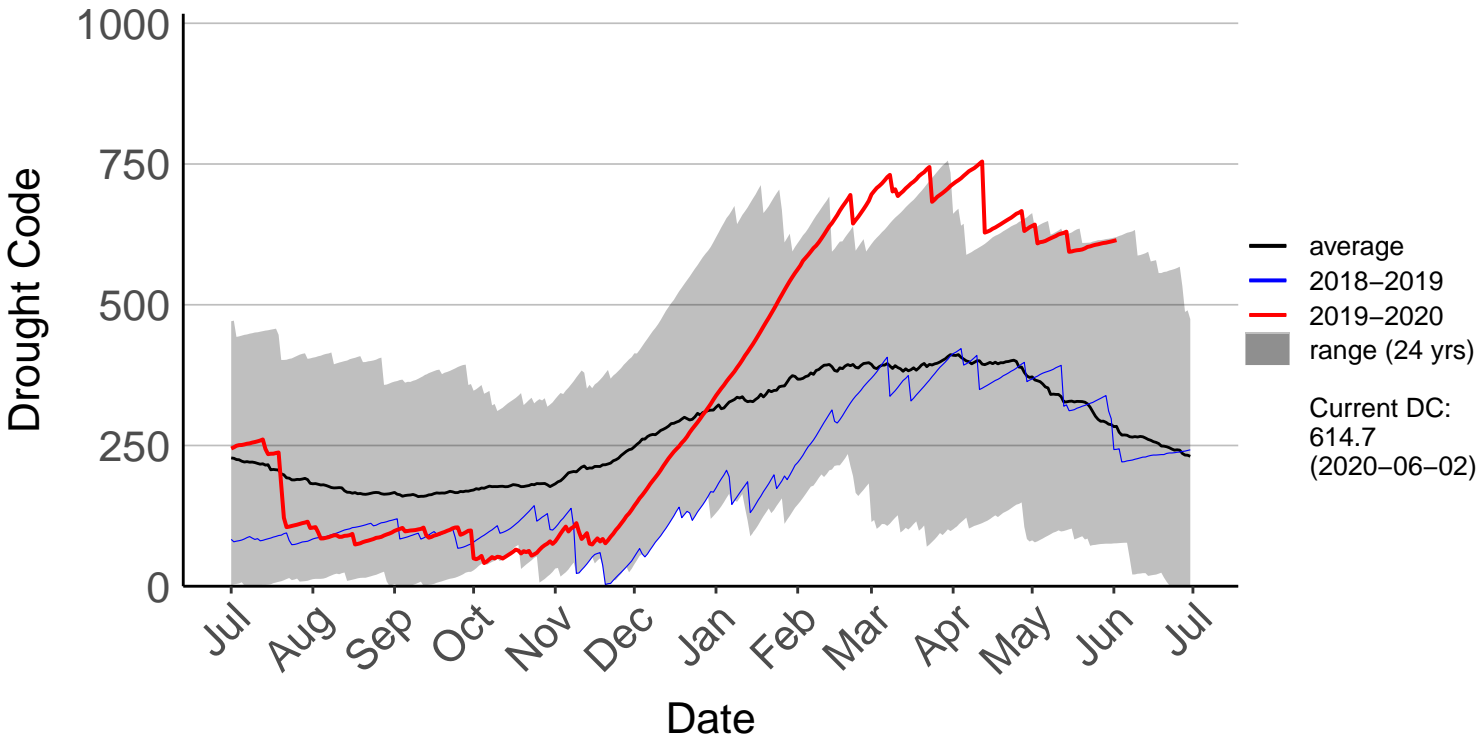
Clyde 2 Ews (Mar 1999 to Jun 2020)



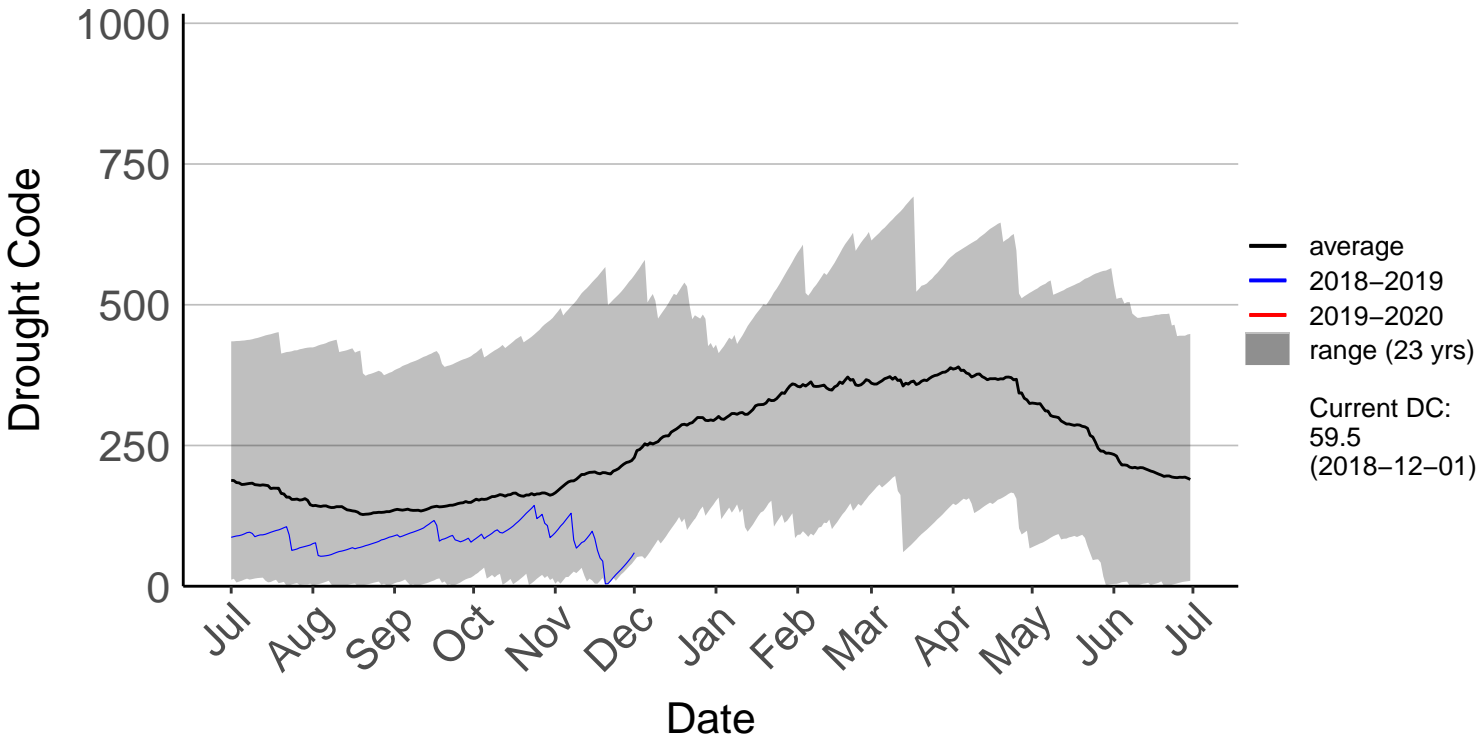
Cromwell Ews (Apr 2006 to Jun 2020)



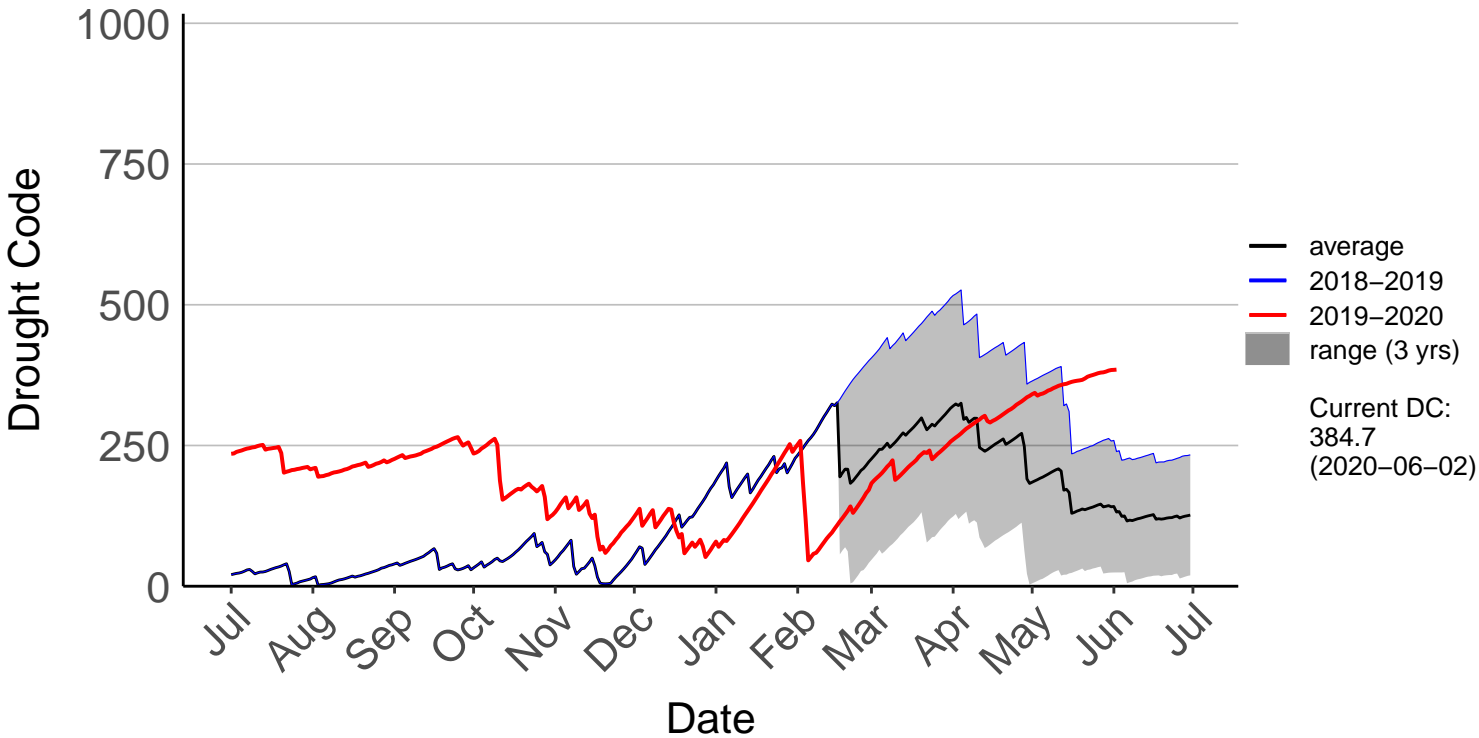
Dansey Pass Raws (Jul 1996 to Jun 2020)



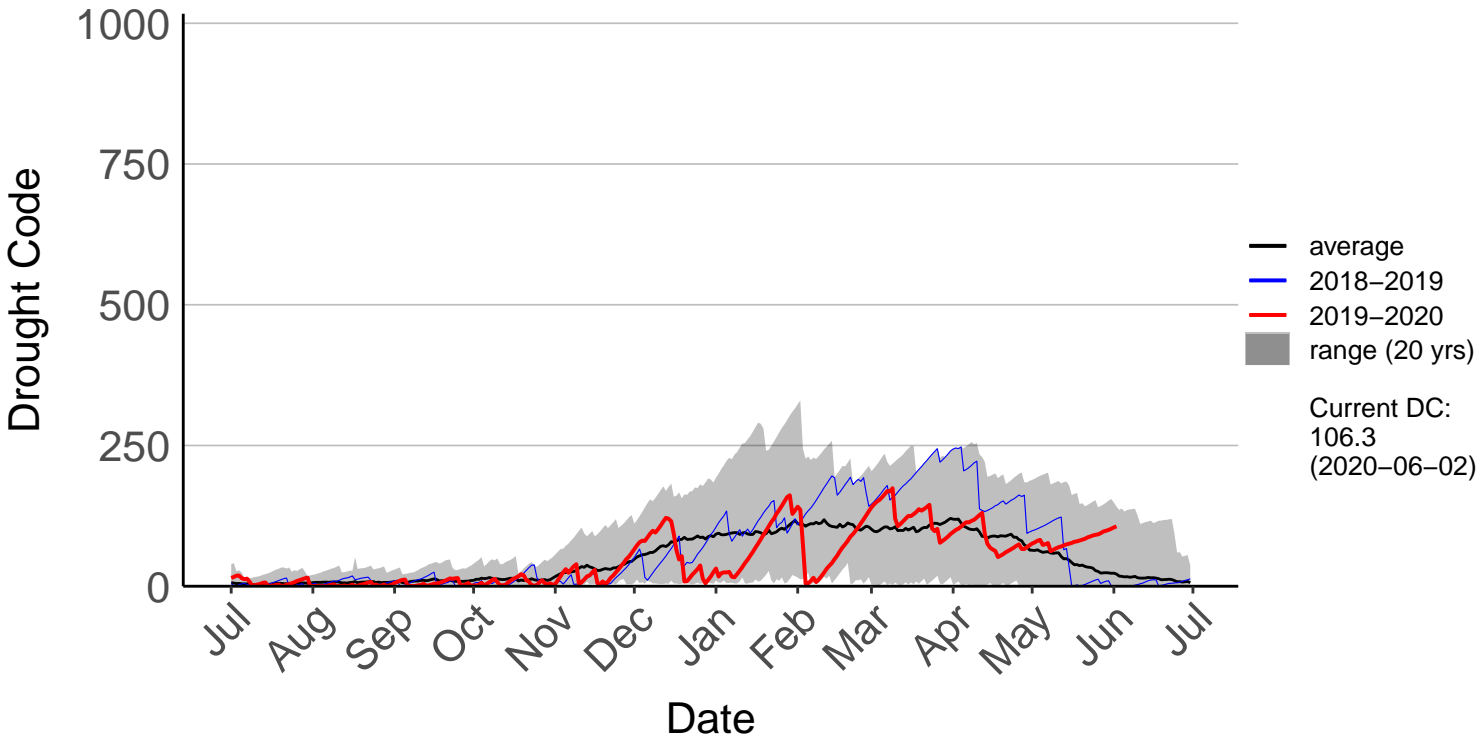
Dunedin Aero SYNOP (Jul 1996 to Dec 2018) – DISCONTINU



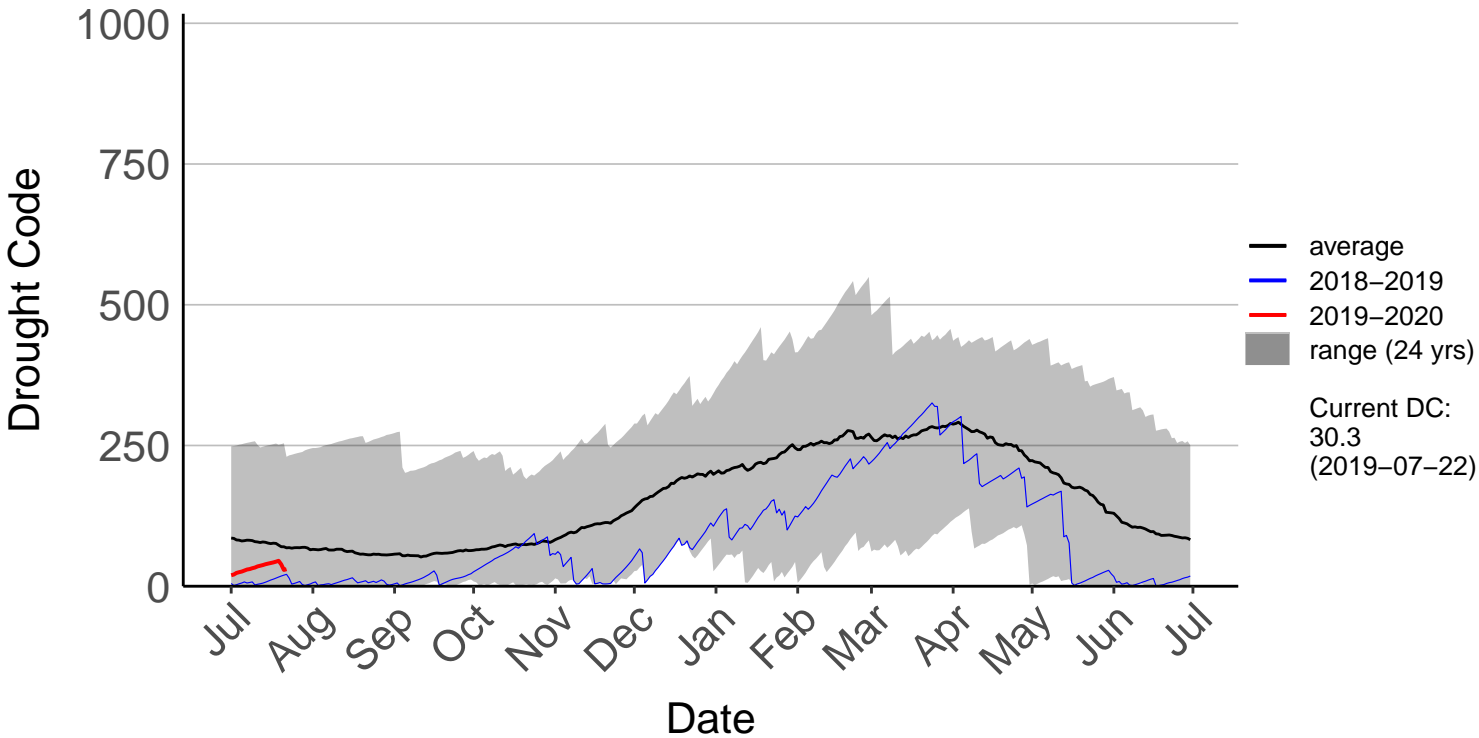
Dunedin Raws (Feb 2018 to Jun 2020)



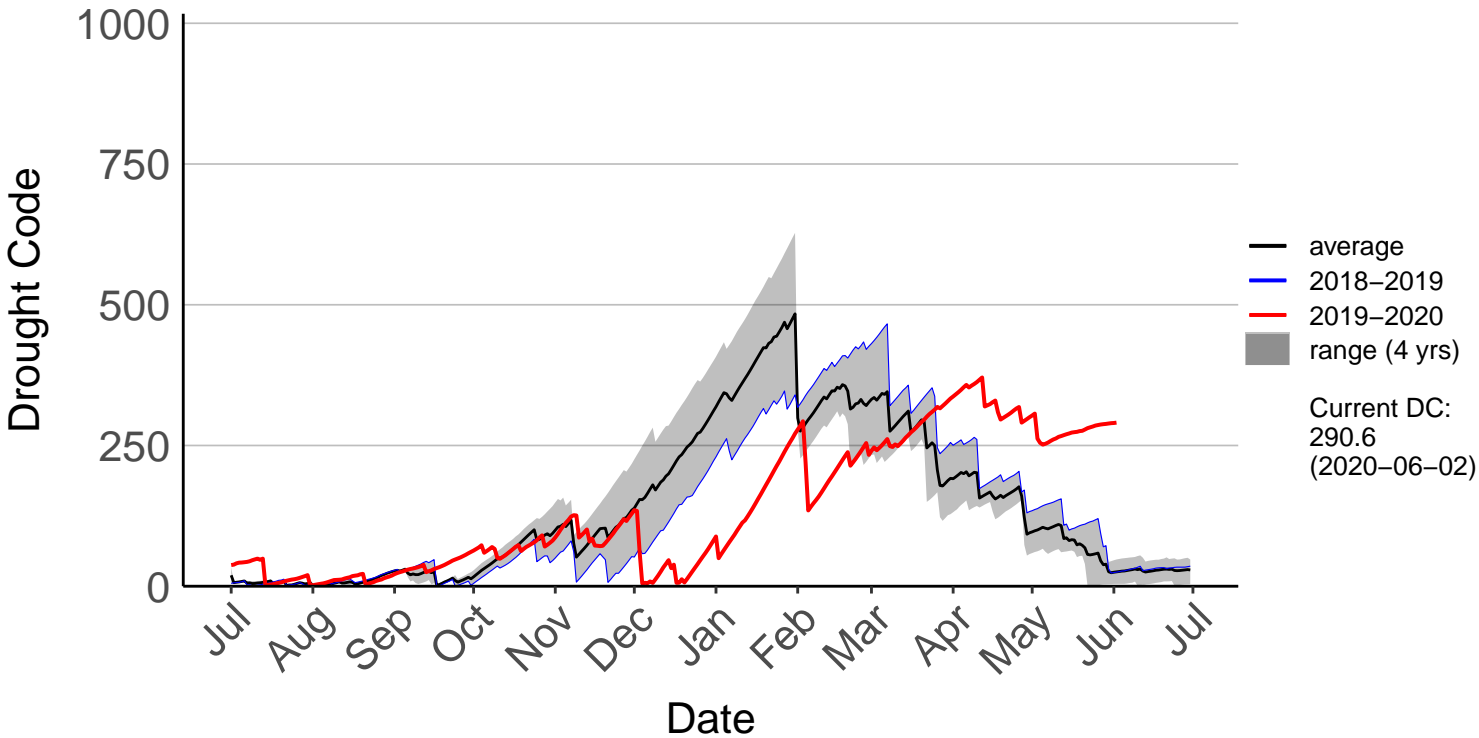
Glendhu Raws (Aug 2000 to Jun 2020)



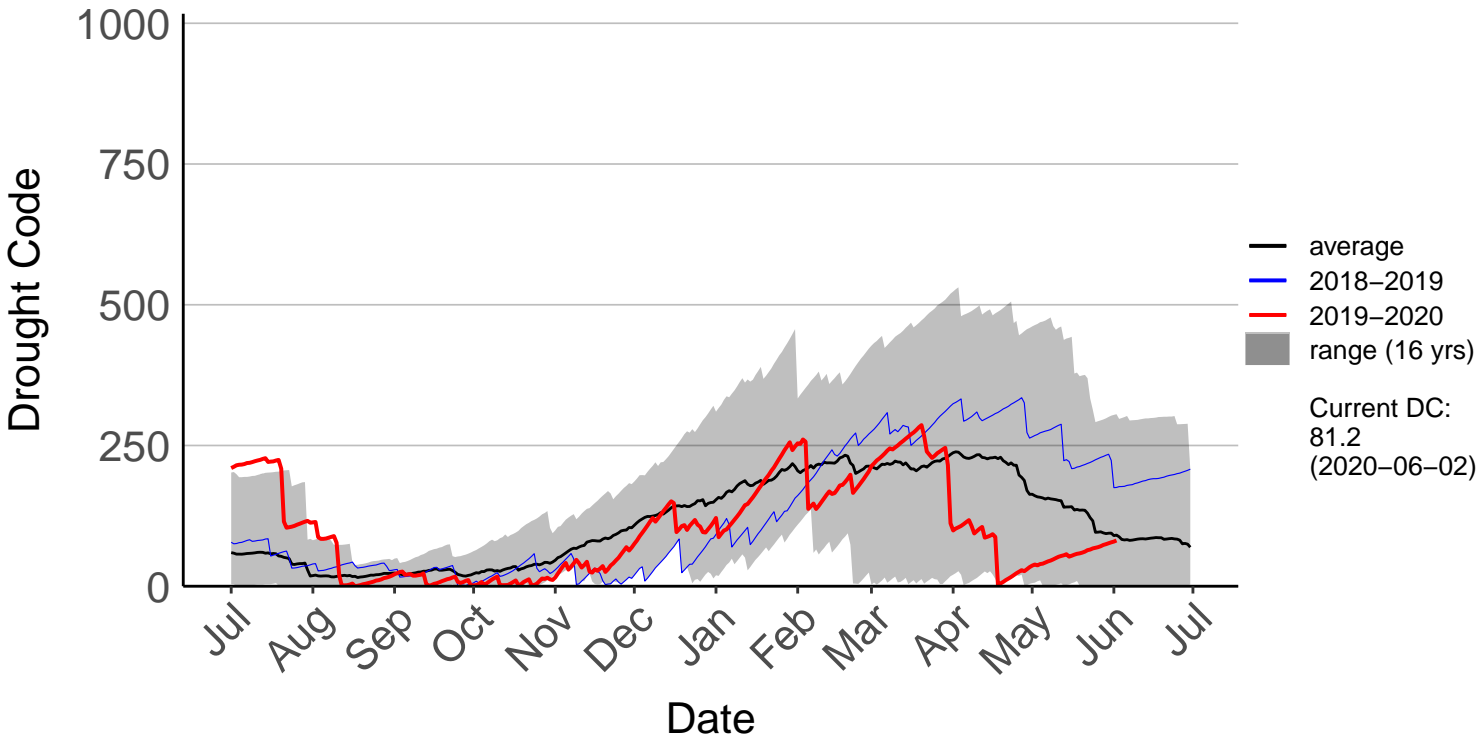
Glenledi Raws (Jul 1996 to Jul 2019)



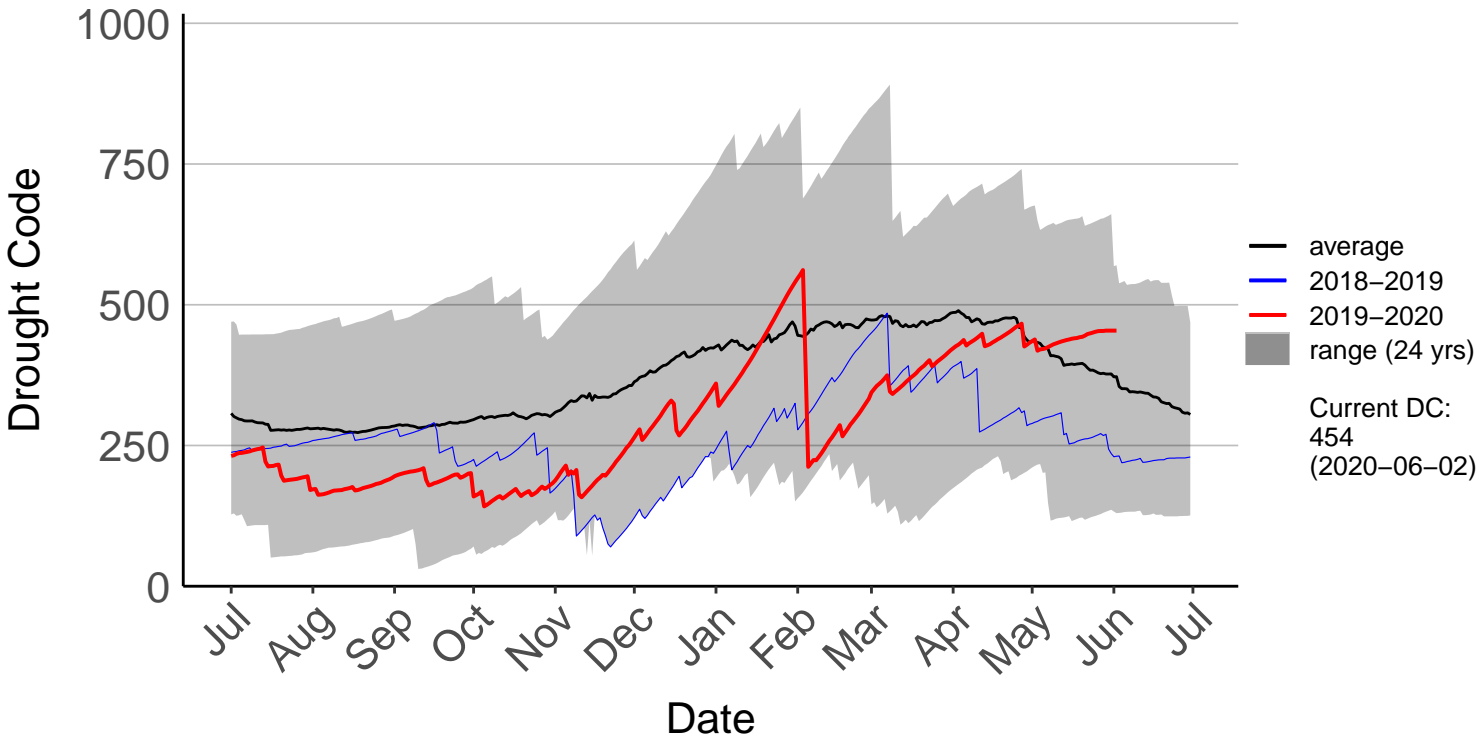
Hawea Flat Raws (May 2017 to Jun 2020)



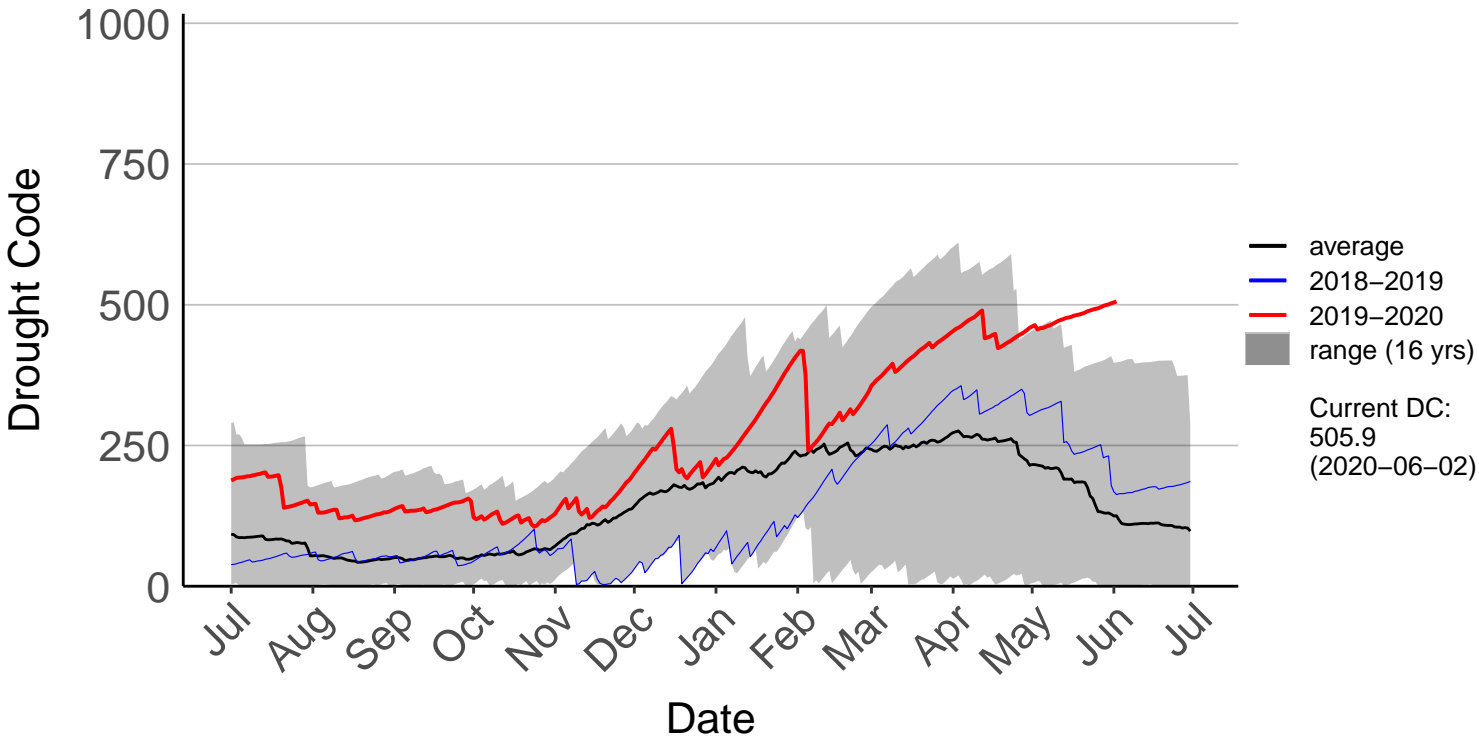
Herbert Raws (Apr 2005 to Jun 2020)



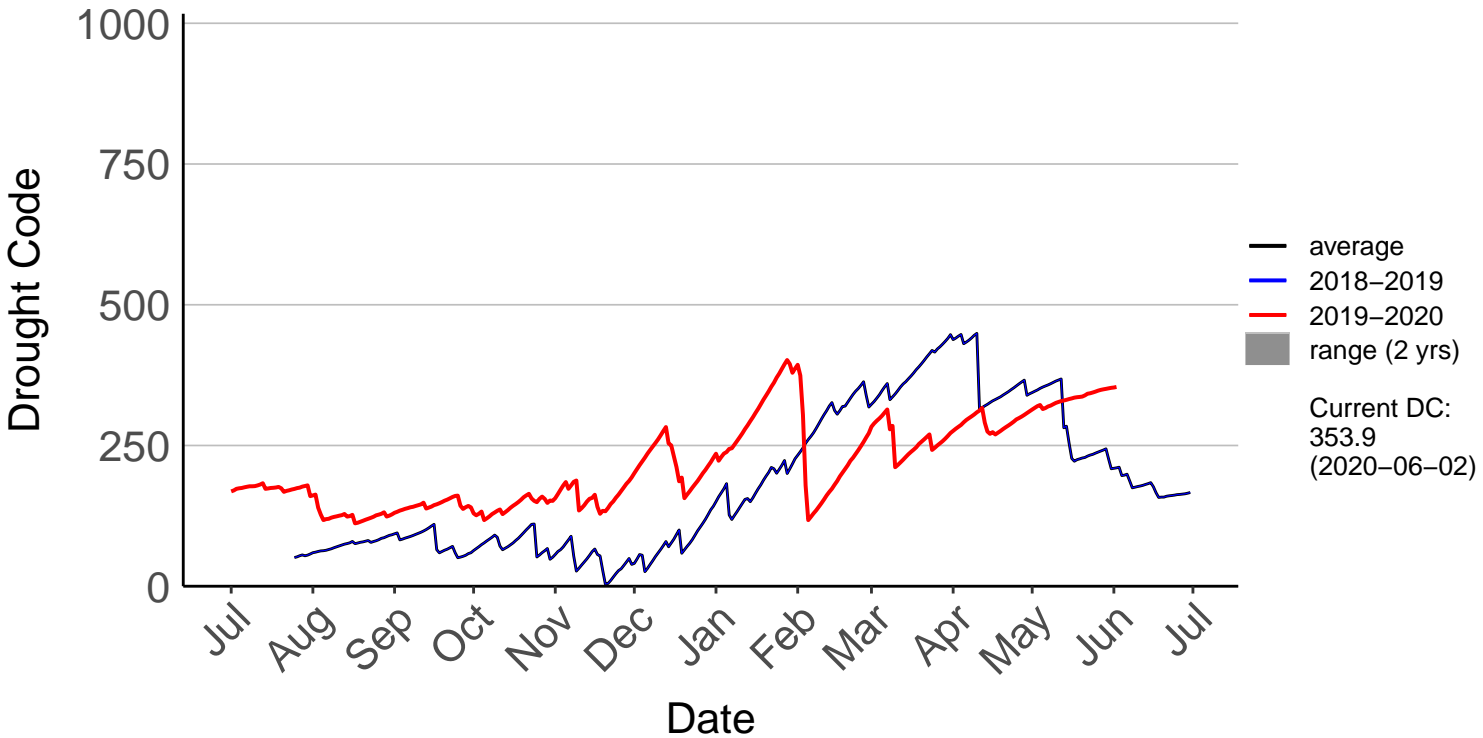
Lauder Ews (Jul 1996 to Jun 2020)



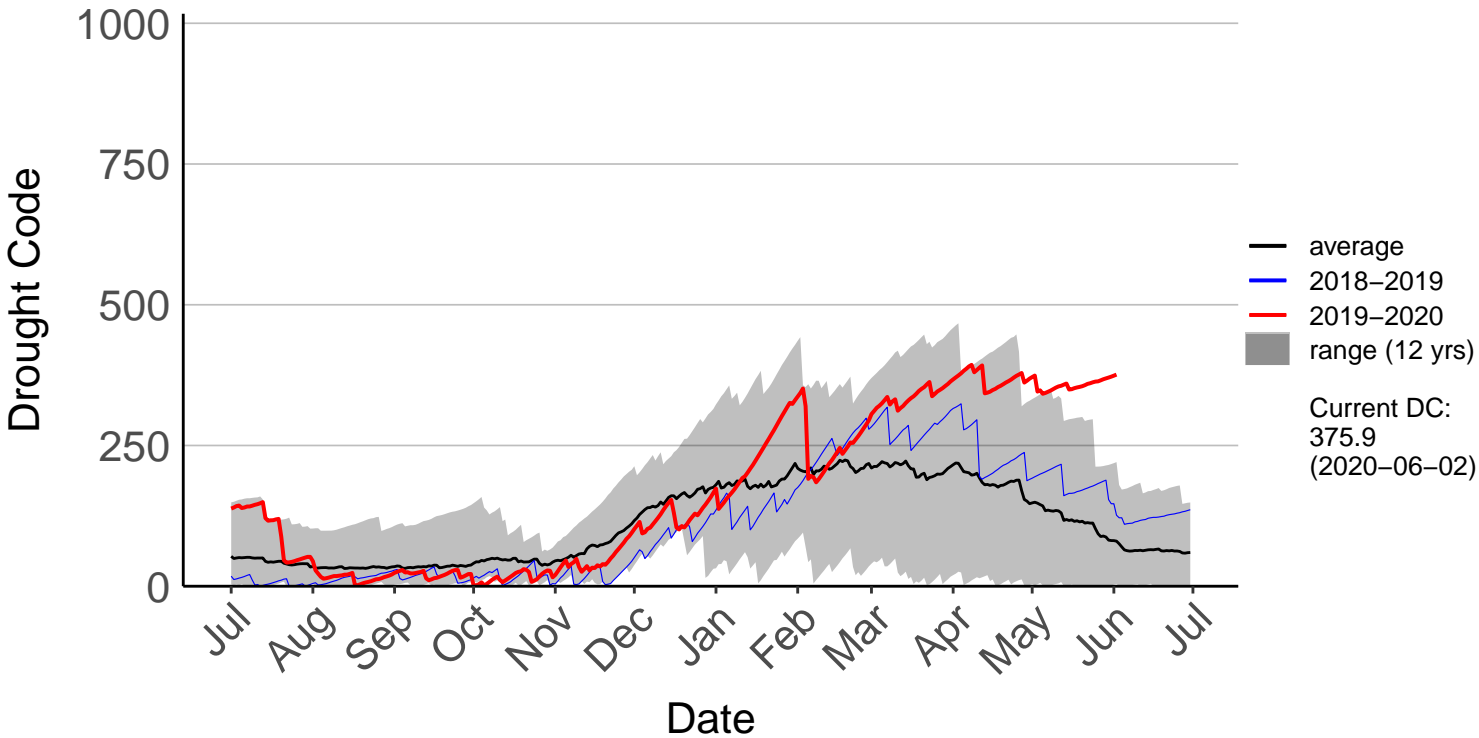
Macrae's Raws (Jul 2004 to Jun 2020)



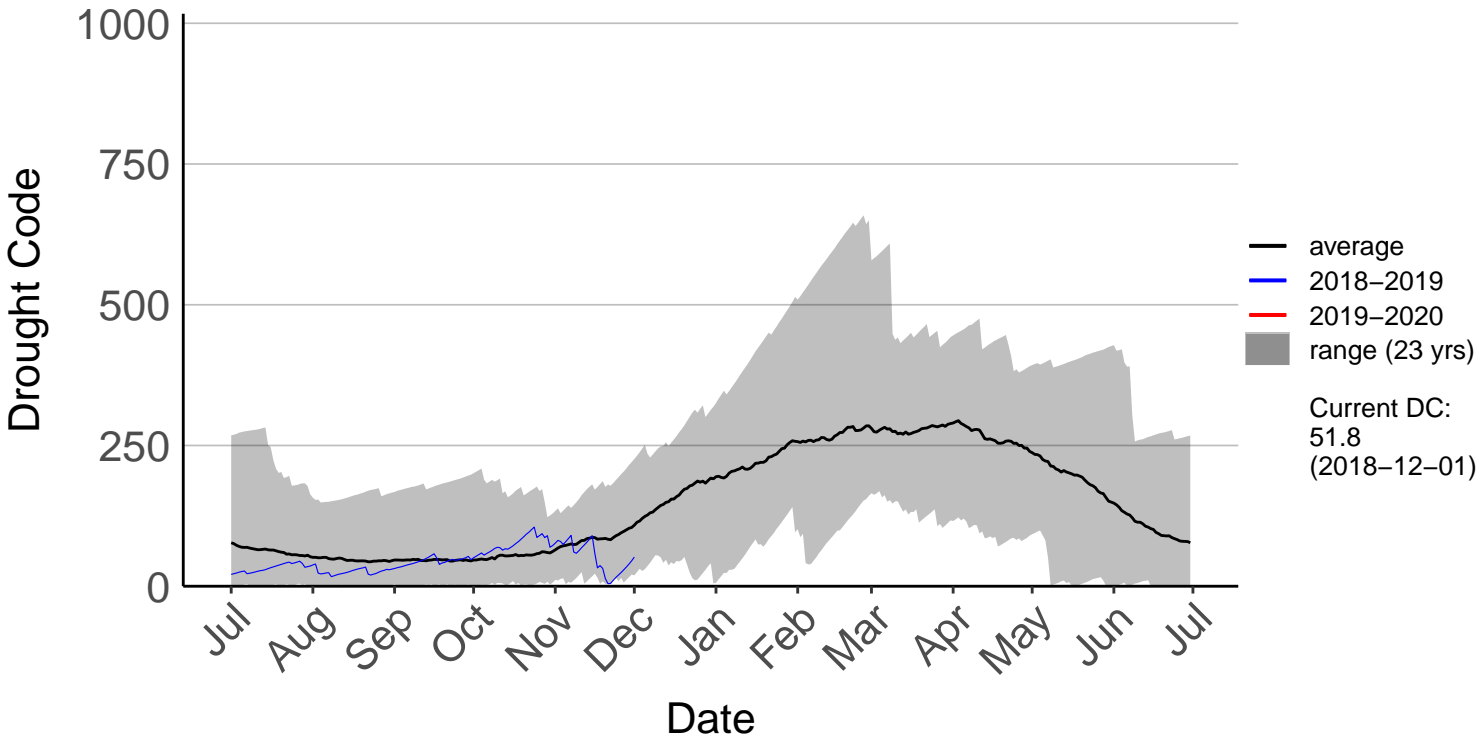
Millers Flat Raws (Jul 2018 to Jun 2020)



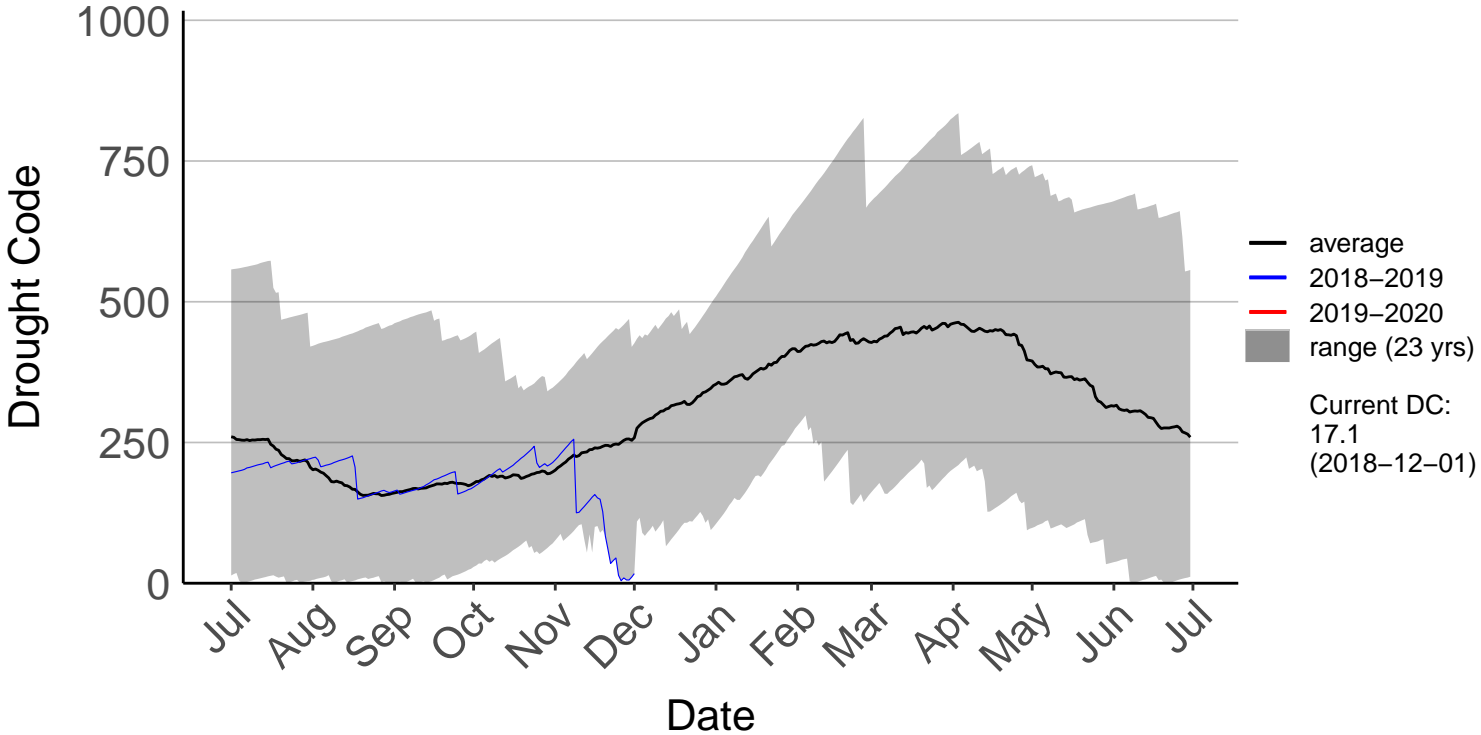
Naseby Forest Raws (Aug 2008 to Jun 2020)



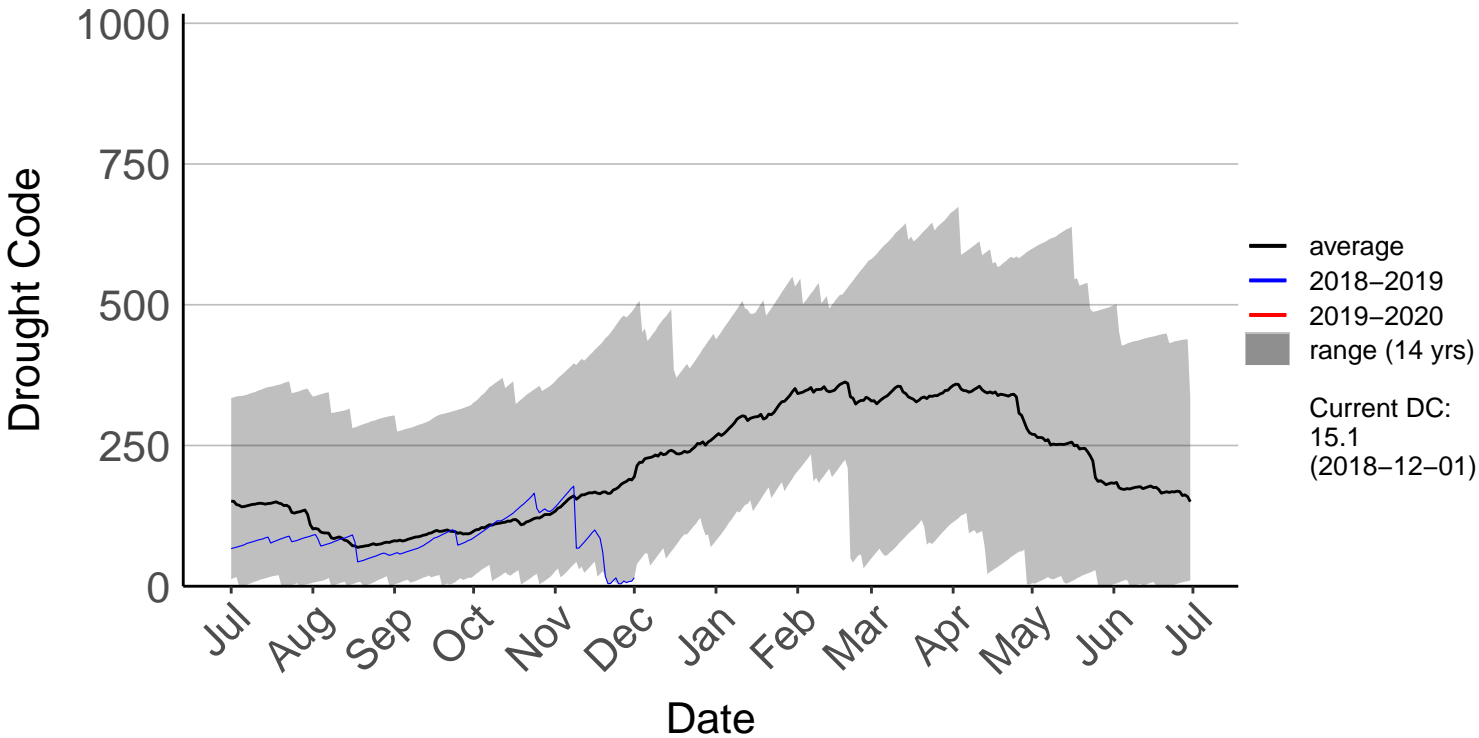
Nugget Point Aws (Jul 1996 to Dec 2018) – DISCONTINUED



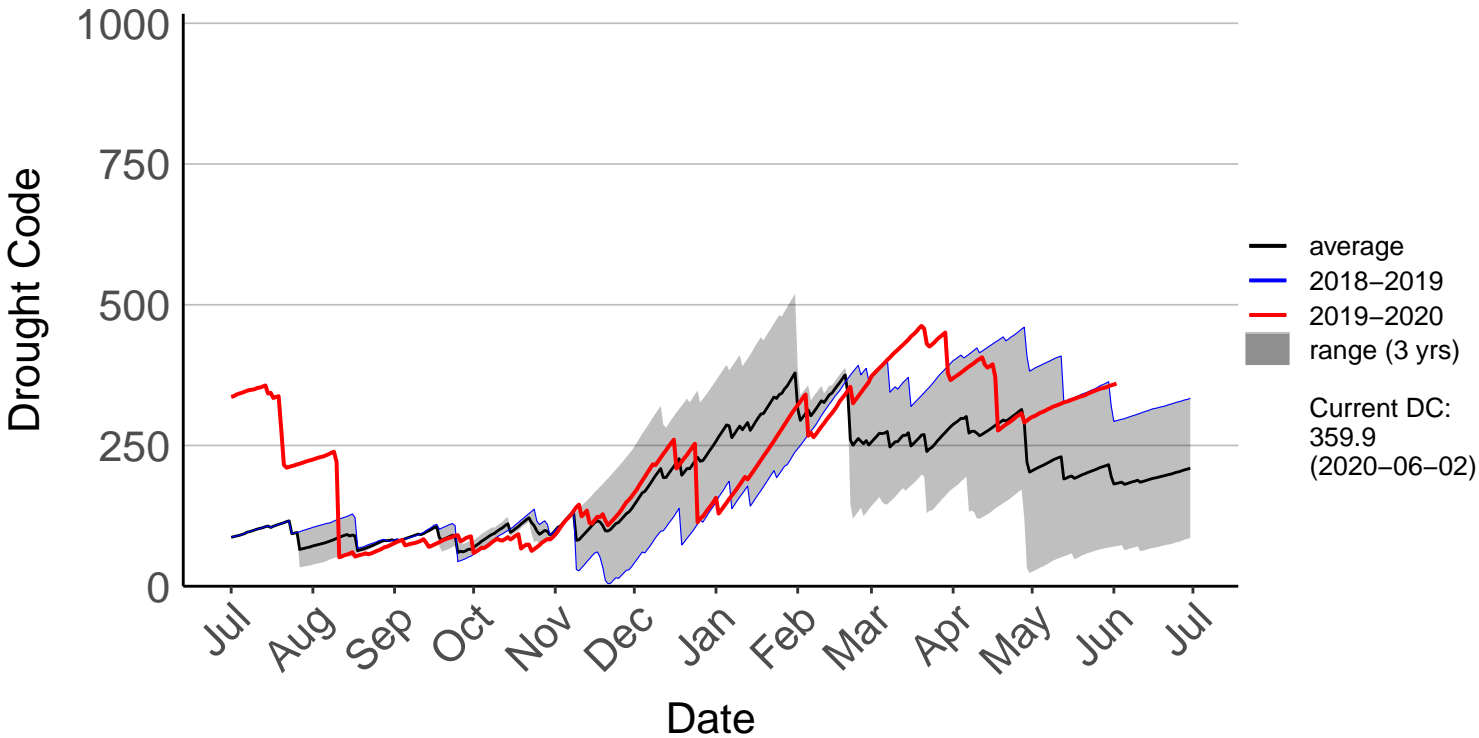
Oamaru Airport Aws (Jul 1996 to Dec 2018) – DISCONTINUED



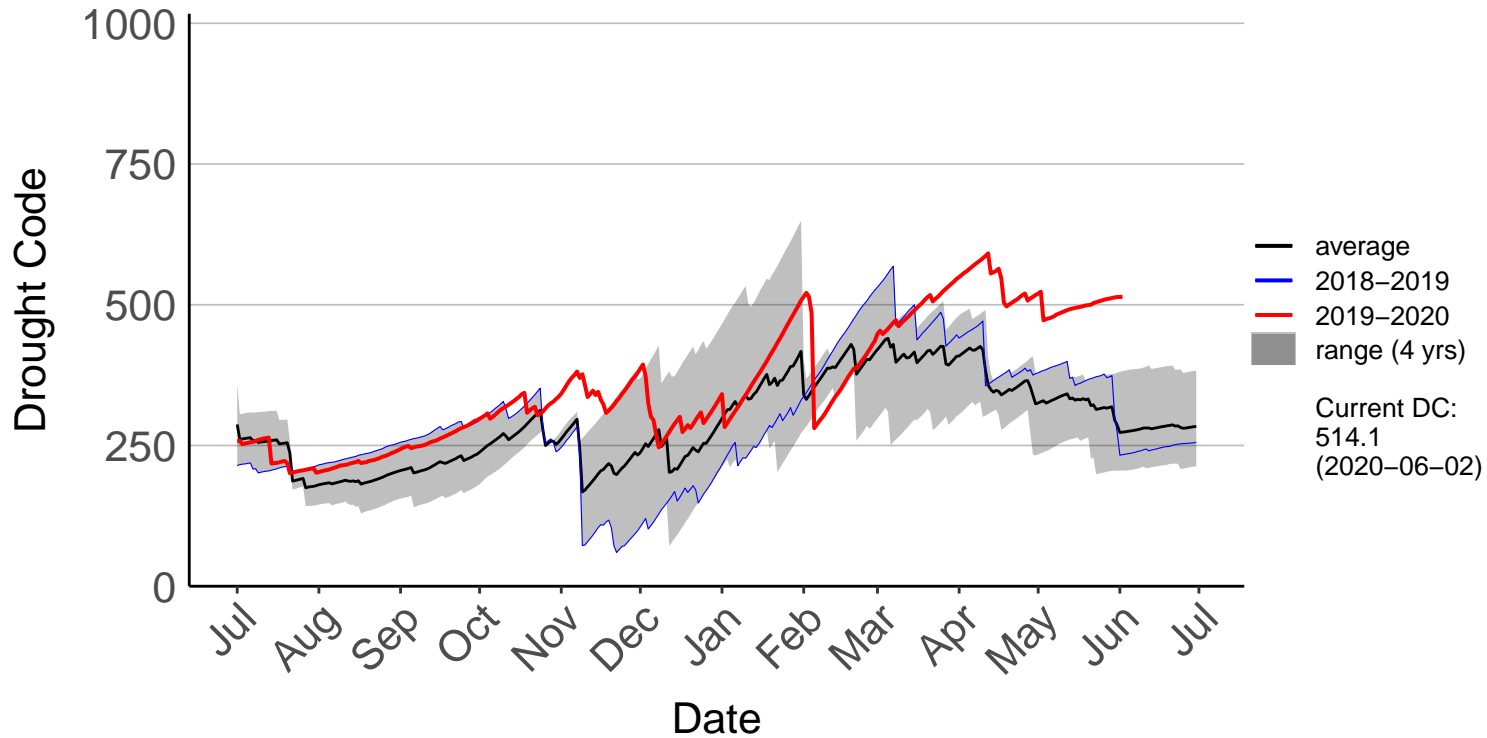
Oamaru Aws (Sep 2005 to Dec 2018) – DISCONTINUED



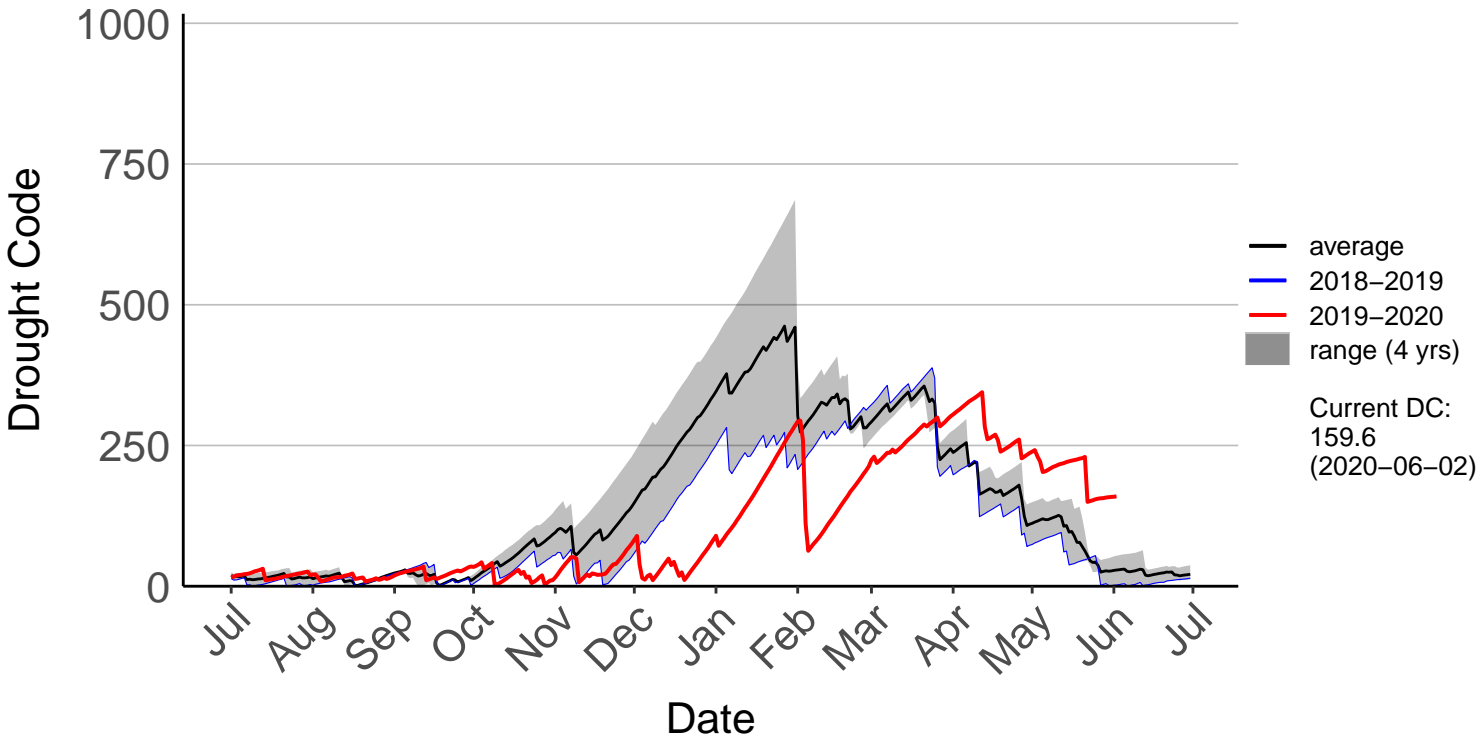
Oamaru North Raws (Jul 2017 to Jun 2020)



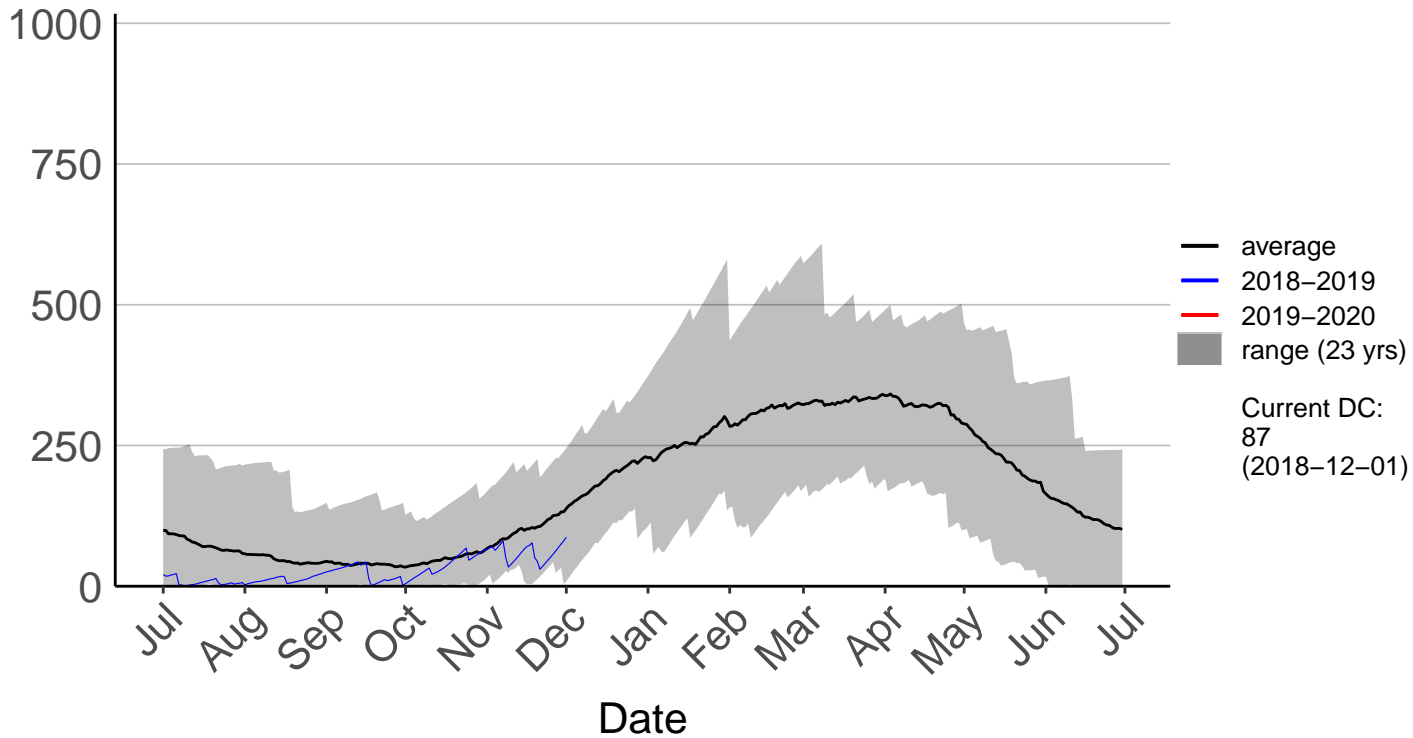
Otematata Raws (Dec 2016 to Jun 2020)



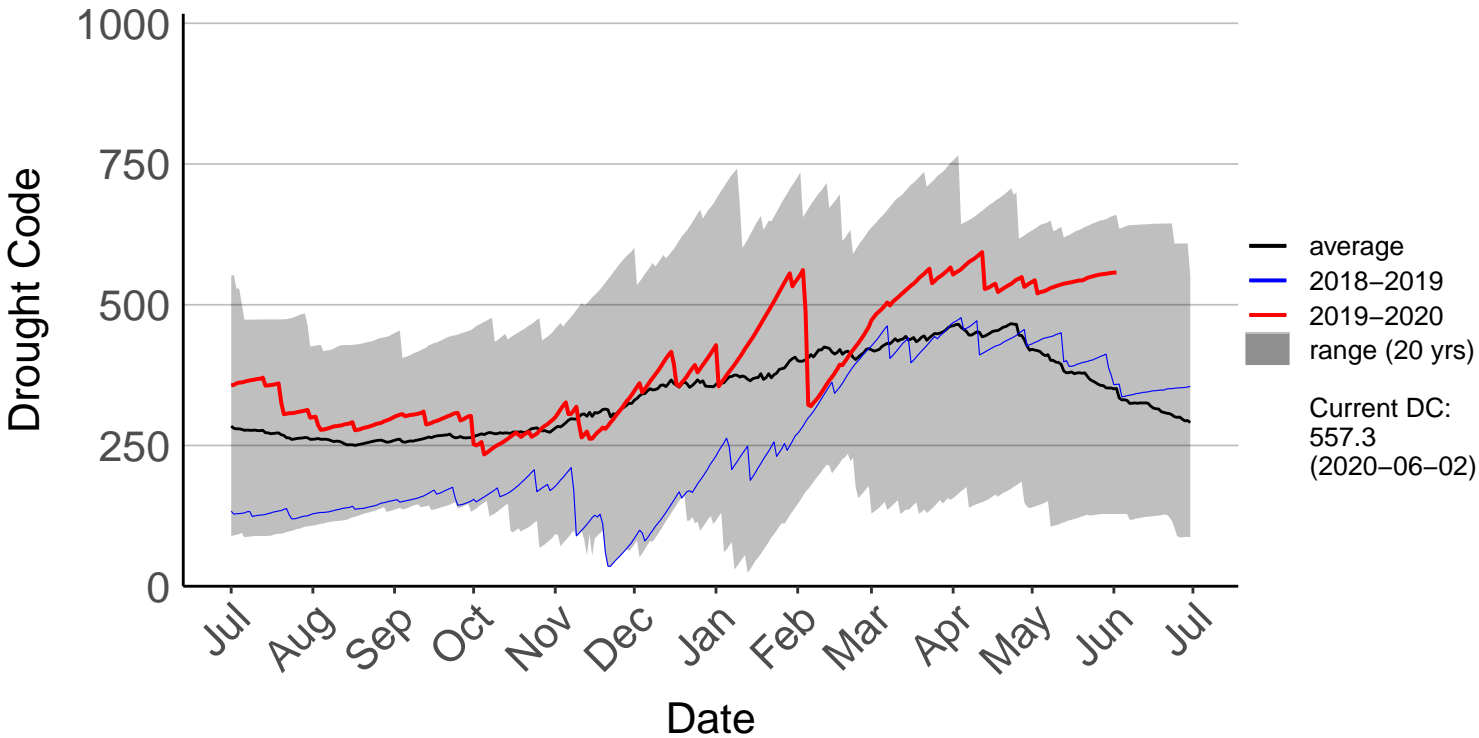
Queenstown Aero Raws (May 2017 to Jun 2020)



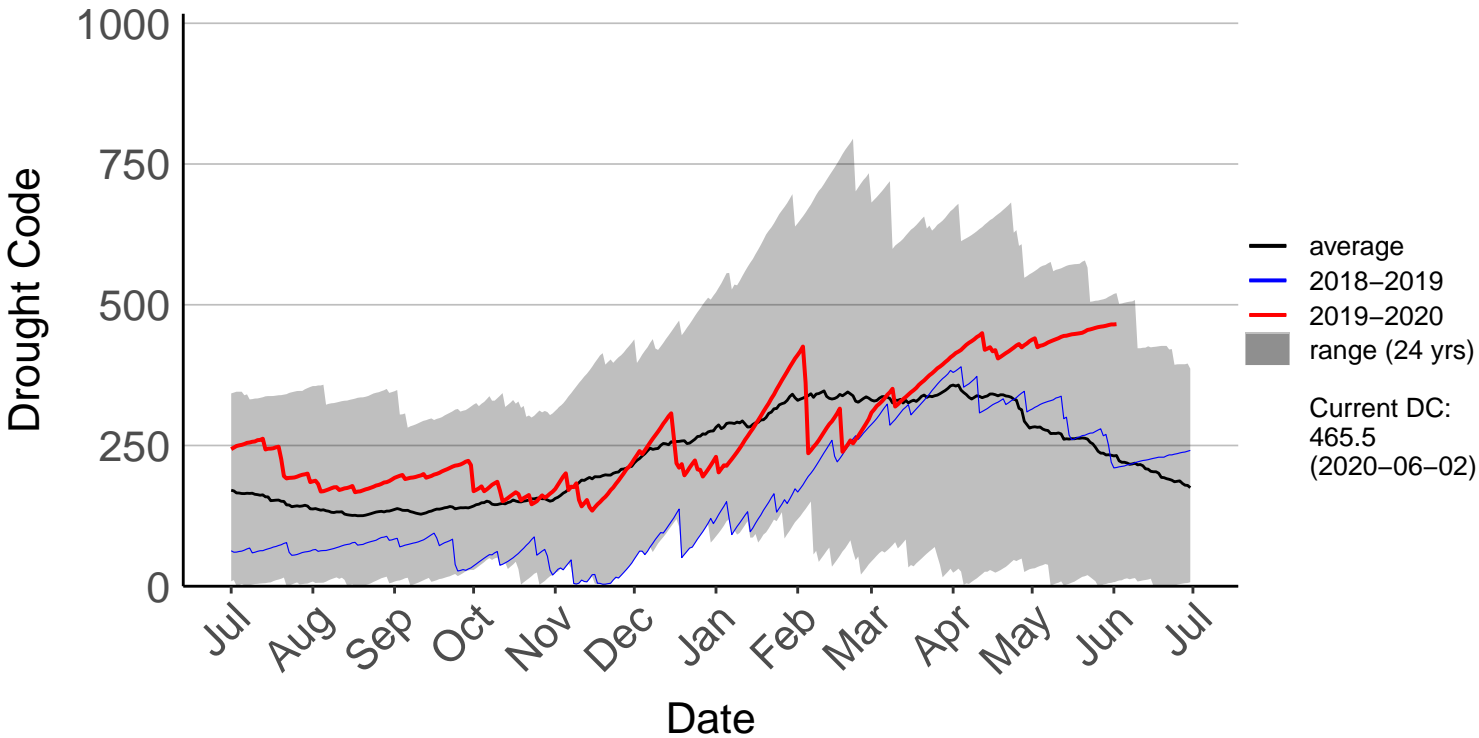
Queenstown Aero SYNOP (Jul 1996 to Dec 2018) – DISCON



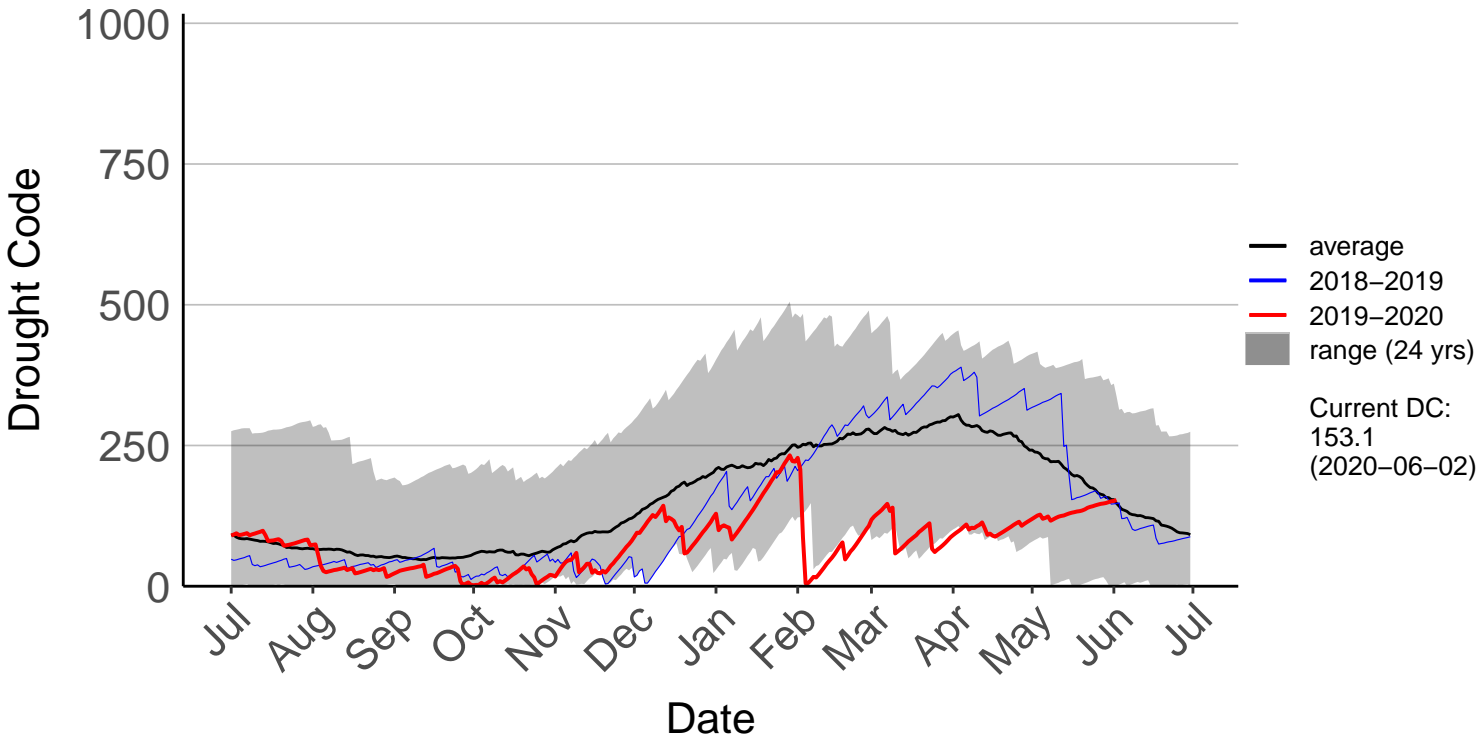
Ranfurly Ews (Nov 2000 to Jun 2020)



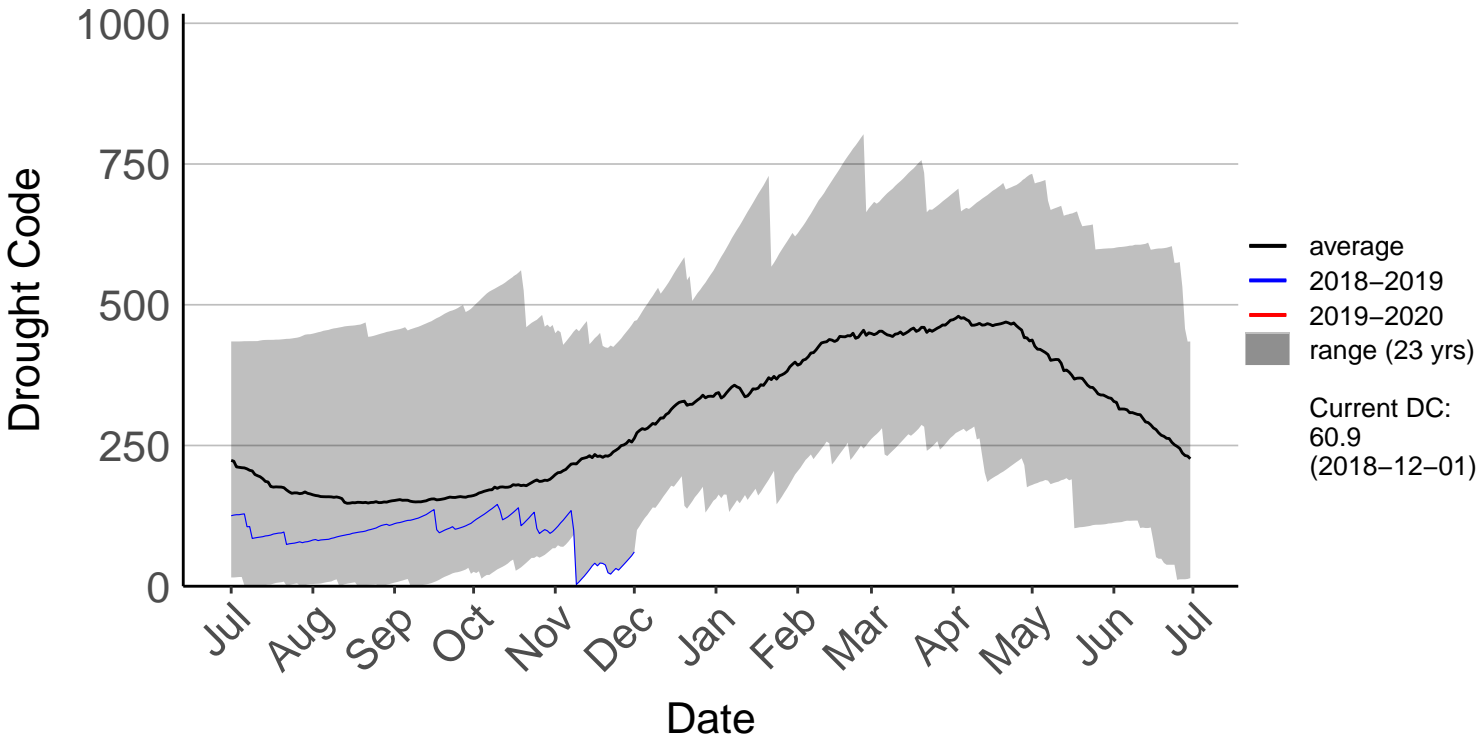
Rock And Pillar Raws (Jul 1996 to Jun 2020)



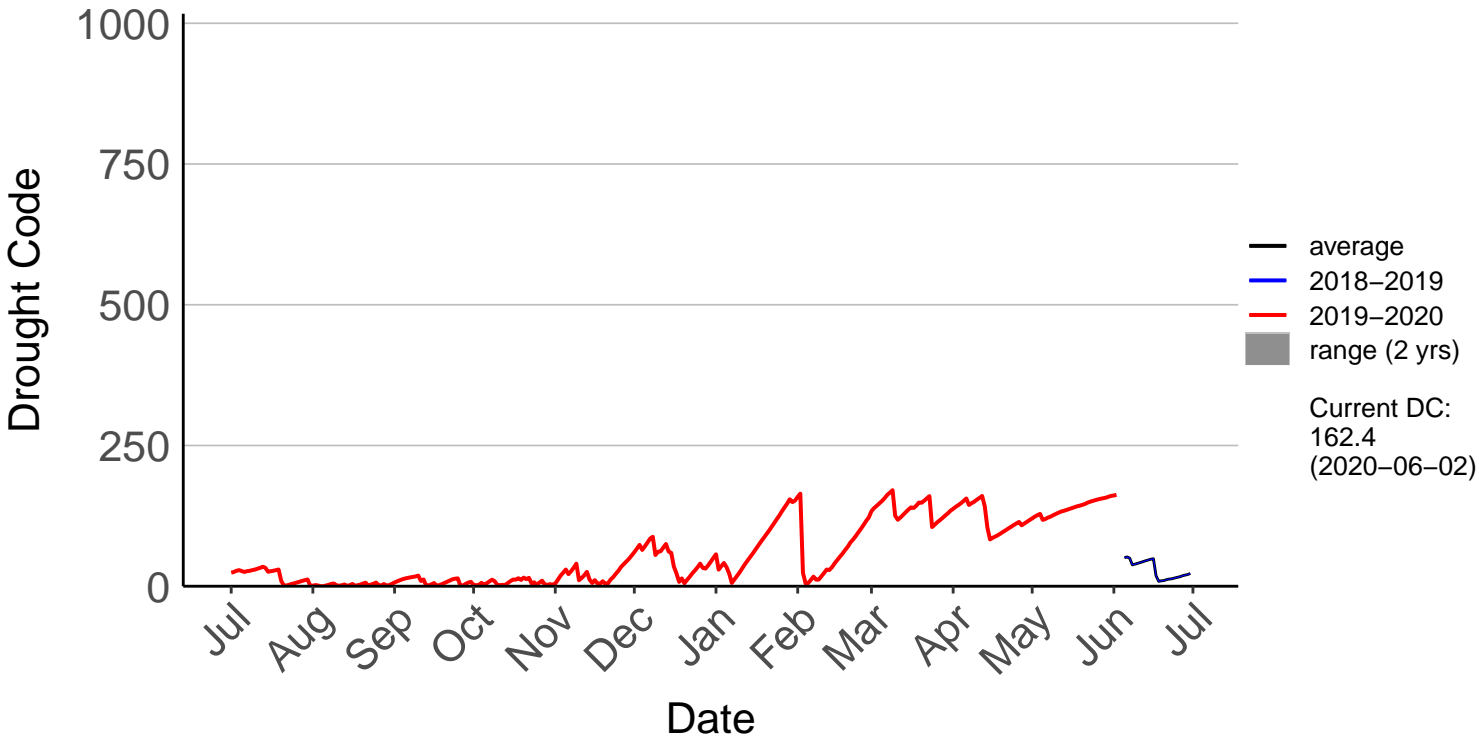
Tapanui Raws (Jul 1996 to Jun 2020)



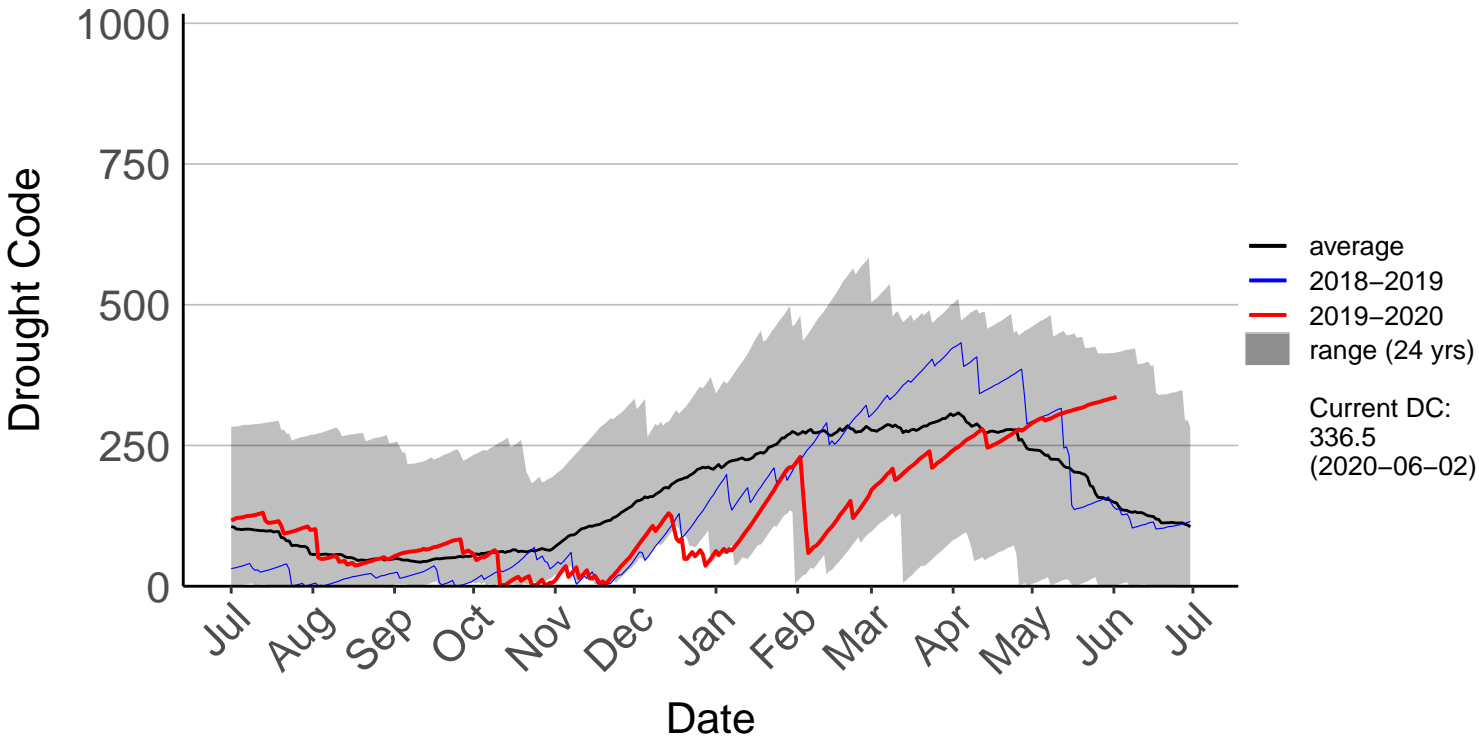
Tara Hills Aws (Jul 1996 to Dec 2018) – DISCONTINUED



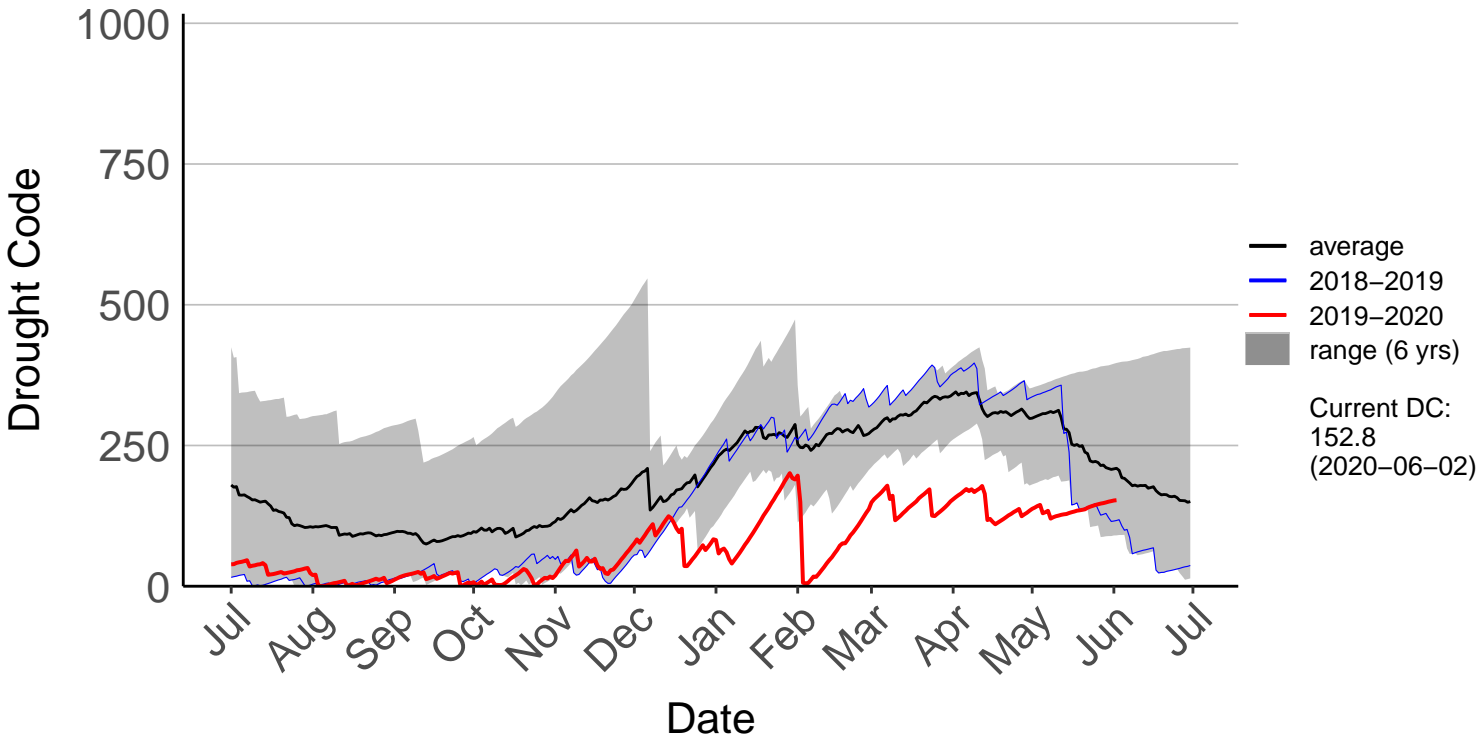
Toko Mouth Raws (Jun 2019 to Jun 2020)



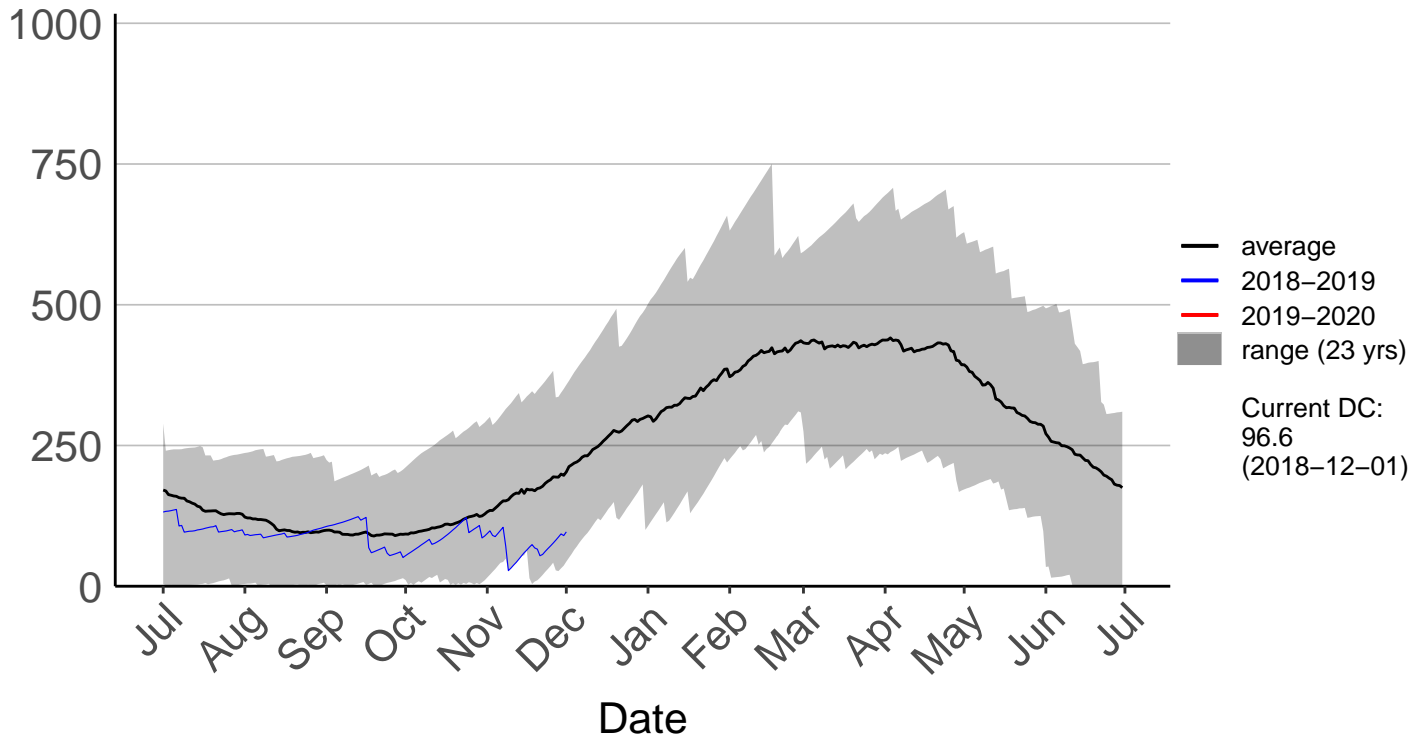
Traquair Raws (Jul 1996 to Jun 2020)



Waipahi Raws (Dec 2014 to Jun 2020)



Wanaka Aero Aws (Jul 1996 to Dec 2018) – DISCONTINUED



Windsor Ews (Nov 2000 to Jun 2020)

